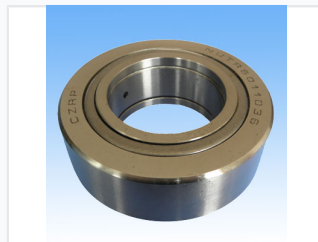


# Yoke Type Track Roller

Yoke type track rollers are specialized bearings designed for linear motion and support. The rollers feature a thick-walled outer ring that withstands high radial and shock loads, making them suitable for demanding applications.



## ADDITIONAL IMAGES



## Product Overview

### Industrial Yoke Type Track Rollers

These Yoke type track rollers, also known as cam followers, are precision-engineered rolling element bearings designed to provide robust linear motion guidance and support. Featuring a thick-walled outer ring, they are specifically constructed to withstand high radial and shock loads commonly found in demanding industrial machinery. Their versatile design supports various mounting configurations, making them ideal for integration into automation equipment, conveyor systems, and machine tools.

## Technical Specifications

### Sealing Availability

Sealed • Unsealed

### Configuration Options

Cylindrical Roller, Crowned Roller, With Cage, Without Cage

## Series Compatibility

### Supported Series

- NUTR
- RSTO
- NATR
- NATV

## Performance Features

### Key Performance Features

- High radial load capacity
- Thick-walled outer ring reduces deformation
- Precision-ground for smooth operation
- Reliable performance in linear motion systems

## Application Areas

### Primary Applications

Cam Mechanisms, Conveyor Systems, Linear Guides, Machine Tools, Automation Equipment