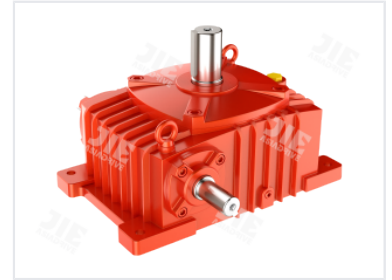


Worm Gear Speed Reducer

This worm gear speed reducer provides high load-bearing capacity and operates with low noise. Its design ensures high efficiency and eliminates oil leakage.



Overview

WPO Series Worm Gear Speed Reducer

The WPO series worm gear speed reducer is engineered for efficient power transmission in diverse industrial environments. Constructed with a durable cast iron housing, it offers excellent vibration damping and robust performance for heavy-duty tasks. The precision-machined internal components ensure smooth, quiet motion control, making it an ideal solution for conveyors and packaging machinery requiring high torque output.

Performance

Key Performance Metrics

0.12 kW

Min Input Power

33.2 kW

Max Input Power

6050 N.m

Max Output Torque

Technical Specifications

Model Range	40~250
Gear Ratio Range	10~60

Application

Typical Applications	Conveyors, Packaging Machinery, Industrial Motion Control
----------------------	---