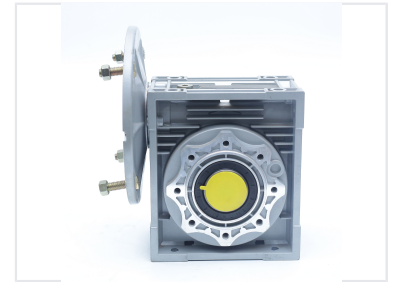


Worm Gear Speed Reducer

This worm gear speed reducer provides efficient speed reduction while increasing torque. Its worm gear design ensures high reduction ratios and quiet operation.



ADDITIONAL IMAGES



Product Overview

NMRV-Series Speed Reducer

The NMRV-series speed reducer is a compact, high-efficiency gearbox engineered for demanding industrial environments. Featuring a robust aluminum alloy housing, it provides excellent heat dissipation and long-term durability. Its precision-machined worm gear design ensures quiet, reliable operation with high reduction ratios, making it an ideal choice for seamless electric motor integration.

Technical Specifications

Lubrication

Pre-lubricated

Input Voltage

220 V

Gear Type

Worm Gear

Housing Material

Aluminum Alloy

Key Features

Quiet Operation, High Torque Transmission, Precision Machined, Sealed Bearings

Mounting Options

Multiple mounting configurations available