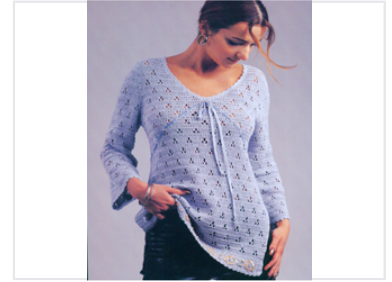


Women's Openwork Knit Tie-Front Top

This women's top features a light blue color and long sleeves. It has a V-neck with a tie at the front and an openwork stitch pattern.



Product Overview

Elegant Openwork Knit Design

This women's openwork knit tie-front top combines style and comfort with its delicate, intricate stitch pattern. Featuring a flattering V-neckline and long, slightly flared sleeves, this garment offers a sophisticated look suitable for casual or semi-casual settings. The front tie closure provides an adjustable fit, while the light blue hue adds a refreshing touch to any wardrobe.

Design Details

Neckline	V-neck
Sleeve Style	Long, slightly flared
Closure	Tie-front
Pattern	Openwork knit

Style & Aesthetics

Color	Light Blue
Occasion	Casual Wear, Smart Casual