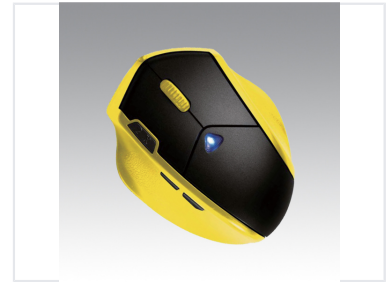


Wireless Ergonomic Gaming Mouse

This high-performance wireless gaming mouse features an ergonomic design for comfortable extended use. It includes customizable buttons for personalized control and a high-precision optical sensor for accurate tracking.



Overview

High-Performance Ergonomic Control

This wireless gaming mouse is engineered for comfort during extended use, featuring an ergonomic design that supports professional productivity and gaming sessions alike. Equipped with a high-precision optical sensor, it ensures accurate tracking for demanding tasks. With customizable buttons and reliable wireless connectivity, this device offers a blend of performance and convenience in a distinct yellow and black aesthetic.

Technical Specifications

Sensor Technology	High-precision optical sensor
Connection Type	Wireless

Features

Customizable Controls	Yes
Design Highlights	Ergonomic, Yellow and Black Theme, Extended Use Comfort

Performance Metrics

Key Performance Indicators

2 X
Performance Multiplier