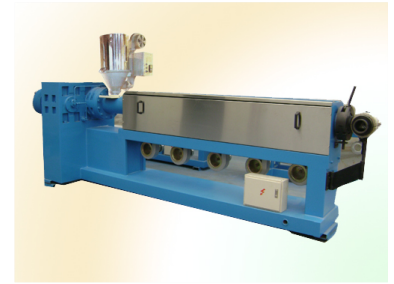


# Wire and Cable Insulation Extruder

This series of plastic extruders applies insulation and protective jacketing to wires and cables. They are designed for extruding PVC, PE, or XLPE.



## Overview

### High-Performance Insulation Extruder

This wire and cable insulation extruder is designed for reliable, continuous operation in industrial settings. It features a robust solid gear speed-down motor for low-noise performance and a sophisticated thermal management system, including aluminum casting heating and water-center screw cooling. The system is fully integrated with precise temperature monitoring to ensure consistent insulation quality for PVC, PE, or XLPE applications.

## Technical Specifications

### Extruder Models Comparison

Specification	SJ45	SJ65	SJ90	SJ120	SJ150
Extruder Diameter (mm)	15	35	60	100	0
Take-up Size (mm)	630	1600	2000	2500	3150
Heat Voltage (kw)	7.5	16	25	37	64
Extruding Speed (kg/h)	34	120	240	400	680

Screw Length-to-Diameter Ratio	25 :1
--------------------------------	-------

## System Configuration

### Included Components

- Pay-off unit
- Tensioning unit
- Extruder
- Cool-water trough
- Haul-off
- Take-up
- Electrical system

## Key Features

Cooling Method	Aluminum casting (Mainframe), Blower cooling, Water-center screw cooling
----------------	--