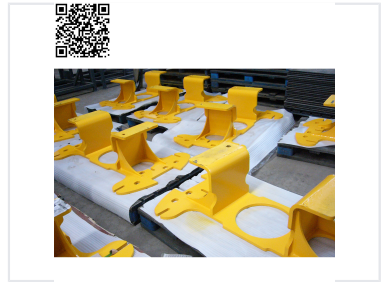
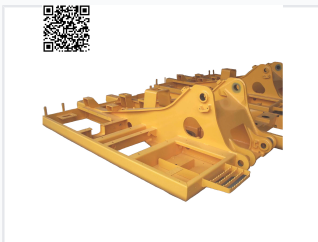


Welded Industrial Machinery Components

These welded components are engineered for integration into various machinery systems. The robust parts provide structural support and ensure reliable performance in demanding industrial applications.



ADDITIONAL IMAGES



Product Overview

Precision-Engineered Industrial Components

These welded industrial machinery components are custom-manufactured to meet demanding OEM requirements. Designed for high-stress applications, they provide robust structural integrity and reliability within complex mechanical systems. Each part is finished with a specialized yellow coating to ensure enhanced corrosion resistance and visibility in industrial environments.

Technical Features

Design Features

- Reinforced structural sections
- Multiple integrated mounting points
- Precision-cut assembly interfaces
- Heavy-duty plate construction
- Corrosion-resistant coating

Key Performance Indicators

1 High

Corrosion Resistance Level

100 %

OEM Customization

Application & Compliance

Application Fields

Heavy Machinery, Industrial Systems, Mechanical Assemblies, OEM Manufacturing