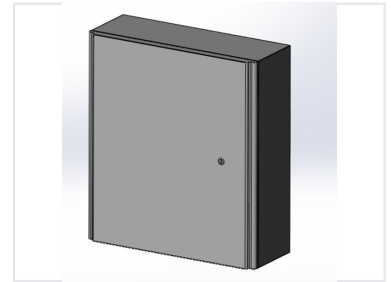


# Weather Resistant Outdoor Storage Enclosure

This weather-resistant enclosure is designed for residential electrical and utility storage. It features a locking mechanism and durable construction suitable for indoor or outdoor installation.



## Product Overview

### Rugged Outdoor Energy Storage Solution

This weather-resistant outdoor storage enclosure is specifically designed to house high-performance LiFePo4 battery systems. Constructed with a durable, powder-coated metal finish, it ensures reliable protection for sensitive components in both indoor and outdoor environments. Its secure, locking door design provides peace of mind for professional residential and utility installations.

## Technical Specifications

### Core Electrical Performance

**50 V**

Nominal Voltage

**50 AH**

Nominal Capacity

**2.5 KWH**

Nominal Energy

Cell Technology

LiFePo4

Operating Temperature

-10 to 55 °C

## Design and Build

Construction Details

Weather Resistant, Powder-Coated Metal, Locking Mechanism, Outdoor Rated