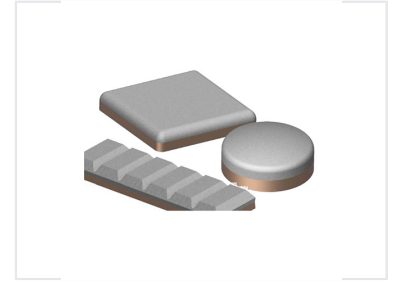


Wear Liners for Mining Shovel Buckets

These wear liners offer high wear resistance for increased production efficiency. They are engineered for high reliability and fatigue resistance, ensuring a hard, tough build.



Product Overview

High-Performance Wear Protection

These Kwiklok wear liners are engineered specifically for mining shovel and backhoe buckets to provide superior protection against severe abrasion and impact. Designed for durability in harsh mining environments, the system features a modular design including buttons, bars, blocks, and runners. This versatility allows for precise surface coverage, significantly extending the operational lifespan of heavy-duty earthmoving equipment and minimizing maintenance downtime.

Product Types

Available Liner Configurations

- Wear Buttons (IB50, IB75, IB90, IB115, IB150)
- Wear Bars (IBR25, IBR38, IBR50, IBR65, IBR90, IBR100, IBR130)
- Wear Blocks (IBL200, IBL300)
- Wear Runners (IR150, IR250)

Compatibility

Equipment Compatibility

Equipment Type	Supported Models
Mining Backhoe/Shovel	6040, 6060, 6080
Mining Backhoe/Shovel	EX800, ZX870, EX1200-5/6, EX1900-6, EX2500, EX3600
Mining Backhoe/Shovel	RH30E/D/F, RH40E/D/F, RH90C, RH120E, RH170B/E, RH340
Mining Backhoe/Shovel	R974, R984, R9250, R9350, R994
Mining Backhoe/Shovel	PC4000, PC5500, PC8000
Electric Shovel	2800, 4100A, 4100XPB, 4100XPC

Supported Equipment

Mining Shovels, Backhoe Buckets, Electric Shovels