

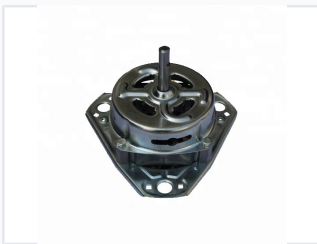
# Washing Machine Spin/Wash Motor

## 60W-180W

Washing machine motor designed for spin and wash cycles with a power range of 60W to 180W. It is suitable for various washing machine models, offering reliable performance for both spinning and washing functions.



### ADDITIONAL IMAGES



## Product Overview

### High-Efficiency Washing Machine Motor

This versatile electric motor is engineered for both wash and spin cycles in household washing and drying machinery. Designed for a power range of 60W to 180W, it offers reliable performance, high efficiency, and quiet operation. The unit features robust construction to ensure a long service life and includes color-coded wiring to simplify the installation process for professional repairs and upgrades.

## Technical Specifications

### Power Range

<b>60 W</b> Minimum Power	<b>180 W</b> Maximum Power
------------------------------	-------------------------------

Rotation Speed 1200 r/min

Electrical Input 220V, 50Hz

## Performance Features

### Key Benefits

- High efficiency energy consumption
- Reliable operational performance
- Reduced vibration levels
- Low noise output

## Installation

Wiring configuration Color-coded wires for simplified installation