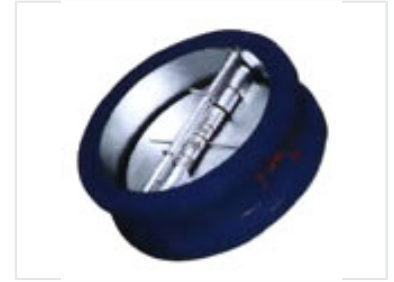


Wafer Check Valve for Backflow Prevention

This wafer check valve prevents backflow in pipelines. It has a compact design for installation between flanges and is suitable for industrial applications.



Product Overview

Reliable Backflow Prevention

This wafer check valve is engineered specifically for effective backflow prevention in industrial pipeline systems. Its compact design allows for seamless installation between standard flanges, making it an ideal choice for space-constrained environments. Built for durability and consistent performance, it ensures operational integrity across a wide range of industrial applications.

Design & Construction

Installation Style	Wafer (between flanges)
Primary Function	Backflow prevention
Key Features	Compact Design, Industrial Grade, Flange-compatible