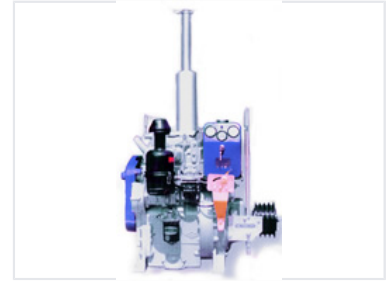


Vehicle Internal Combustion Engine

This auto engine is a critical component in vehicle propulsion systems. Its complex arrangement of parts is designed for efficiency and reliability.



Overview

High-Performance Internal Combustion Engine

This internal combustion engine is engineered as a critical component for vehicle propulsion systems, prioritizing efficiency and reliable performance. Featuring a robust construction, the engine block is designed to withstand the high temperatures and pressures inherent in automotive operation. The assembly integrates a sophisticated air intake system and fuel injection technology to ensure optimal power delivery and durability.

Technical Specifications

Key Components

- Air intake system
- High-efficiency air filter
- Fuel injection system
- Durable engine block

Application

Vehicle Propulsion

Design Focus

High Temperature Resistance, High Pressure Resistance, Efficiency, Reliability