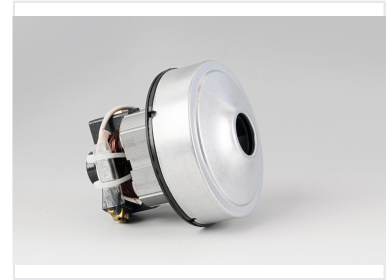
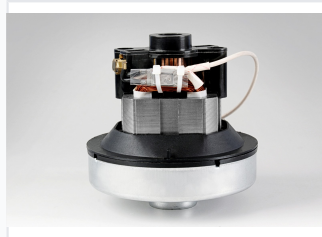
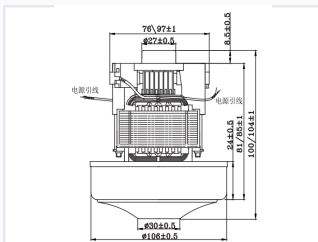


Vacuum Cleaner Motor 600-800W

This vacuum cleaner motor provides high efficiency. It operates within a power range of 600-800W.



ADDITIONAL IMAGES



Product Overview

High-Performance Vacuum Cleaner Motor

The HWX-CG16(D) is a professional-grade vacuum cleaner motor engineered for high suction efficiency and reliability. Designed to support diverse power requirements ranging from 600W to 1200W, it ensures consistent operation across different vacuum models. With integrated cooling and robust internal components, this motor provides a balanced solution for both replacement parts and new product development.

Performance Metrics

Performance Metrics

38 %

Max Suction Efficiency

96 dB

Noise Level

115 K

Temperature Rise

Technical Ratings

Input Power (W)	Vacuum (Kpa)	Airflow (m³/min)
600	17	2.4
800	19	2.5
1000	21	2.6
1200	24	2.8

Electrical Specifications

Electrical Characteristics

- Model: HWX-CG16(D)
- Voltage: 100-240V
- Frequency: 50/60 Hz
- Spark Grade: <2