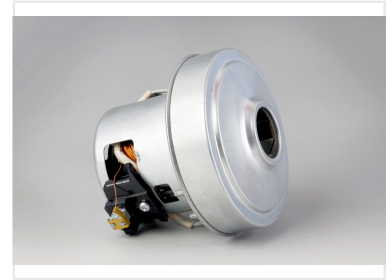
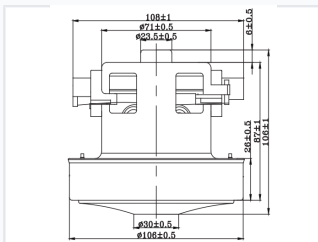


# Vacuum Cleaner Motor

This vacuum cleaner motor is designed for powerful suction and efficient operation. It features robust construction with copper windings for enhanced conductivity and long-lasting performance.



## ADDITIONAL IMAGES



## Product Overview

### High-Performance Vacuum Motor

The HWX-CG46 is a specialized dry-use vacuum cleaner motor engineered for high suction efficiency and robust thermal management. Built with quality copper windings and a durable metal housing, this motor ensures reliable electrical contact and long-lasting performance. It is designed for seamless integration into various vacuum models, providing optimal cleaning power across diverse industrial or residential applications.

## Electrical Specifications

Rated Voltage	100-240V
Rated Frequency	50 Hz

## Performance Metrics

### Power and Suction Performance

Input Power (W)	Max Vacuum (Kpa)	Max Airflow (m³/min)
600	15	2.2
800	19	2.4
1000	20	2.6

### Efficiency

**47 %**

Max Suction Efficiency

## Operational Characteristics

Noise Level	<92 dB
Spark Grade	< 2
Temperature Rise	115 K

## Dimensions

Key Dimensions (mm)	Height: 108±1, Base Diameter: 106±0.5, Middle Diameter: 71±0.5, Top Diameter: 23.5±0.5
---------------------	--