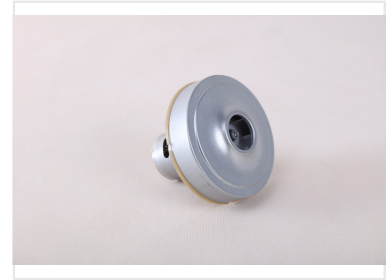
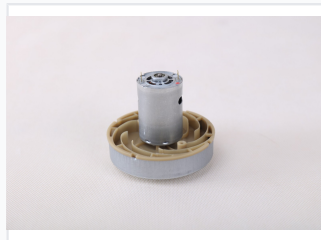
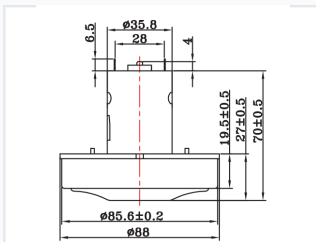


Vacuum Cleaner DC Motor

This DC motor is designed for vacuum cleaner applications. It is optimized for high-speed operation and efficient power consumption.



ADDITIONAL IMAGES



Product Overview

High-Performance Vacuum DC Motor

The CG-DC86 is a robust and compact DC motor specifically engineered for vacuum cleaner applications. It provides versatile power options ranging from 2.4V to 30V, making it suitable for a wide variety of cleaning equipment models. With a focused design on suction efficiency and high-speed reliability, this motor ensures consistent performance for demanding cleaning tasks.

Technical Performance

Rated Input Power

40 W

Minimum Power

150 W

Maximum Power

Rated Voltage

2.4V - 30V

Max Vacuum Degree

3KPA - 12KPA

Physical Dimensions

Detailed Specifications

Component	Measurement
Top Section Diameter	35.8mm
Inner Diameter	28mm
Top Section Height	6.5mm
Middle Segment 1	19.5mm
Middle Segment 2	27mm
Outer Edge Diameter	88mm
Total Motor Height	70 mm
Base Diameter	85.6 mm