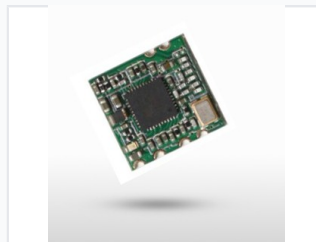
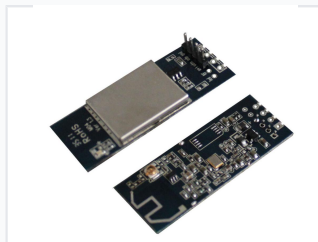


# USB Interface Wi-Fi Module

This Wi-Fi module features a USB interface for easy connectivity. It supports 150Mbps and 300Mbps speeds and is compatible with Linux and Android.



## ADDITIONAL IMAGES



## Overview

### Professional Wireless Connectivity

This USB Interface Wi-Fi module is designed for seamless integration into embedded systems and IoT devices. It utilizes a high-performance Ralink chipset to deliver reliable 802.11 b/g wireless networking. With a compact form factor and an external IPEX antenna interface, it provides flexible deployment options for diverse network applications.

## Technical Specifications

Chipset	Ralink RT3070
Interface	USB 2.0 (4-pin 2.0mm male pitch jumper)
Frequency Range	2412-2483.5 MHz (ISM band)
Peak Throughput	27 Mbps

## Performance Metrics

### Supported Data Rates

- 802.11b: 1, 2, 5.5, 11 Mbps
- 802.11g: 6, 9, 12, 24, 36, 48, 54 Mbps

## Certification & Compliance

Certifications	Wi-Fi, WPA, WPA2, WMM, WMM-PS, WHQL, Cisco CCX, USB-IF
----------------	--

## Hardware Features

### Hardware Attributes

RoHS Compliant • External IPEX Antenna • Link/Activity LEDs