

Underwater LED Light for Marine Use

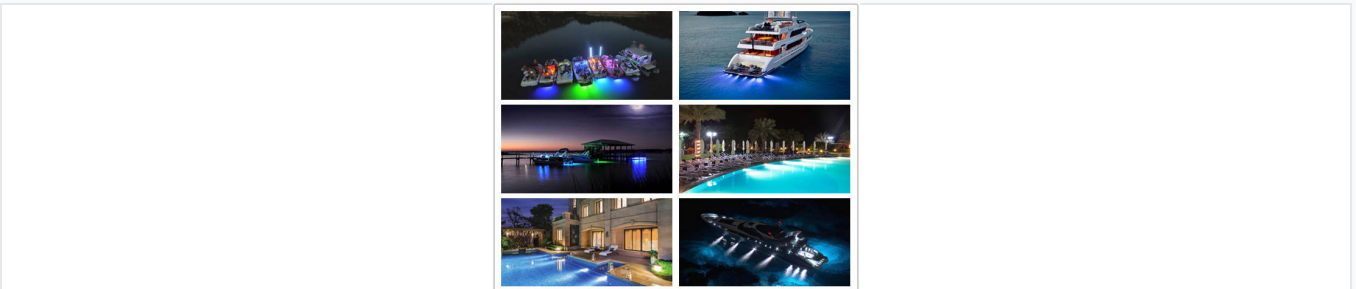
This underwater LED light is designed for marine applications such as submarines, yachts, and boats. It features a 316L stainless steel shell for excellent corrosion resistance and utilizes high-power LEDs for efficient illumination.



ADDITIONAL IMAGES



Overview



Enhance the aesthetic appeal and safety of your yacht with powerful underwater illumination.

High-Performance Marine Illumination

This high-intensity underwater LED light is engineered specifically for demanding marine environments such as yachts, boats, and submarines. Featuring a robust 316L stainless steel housing and a tempered glass cover, it provides exceptional corrosion resistance and durability. With power options of 27W and 45W, it delivers high luminous efficiency to enhance underwater visibility, safety, and aesthetic appeal.

Technical Specifications



High-intensity output provides clear visibility and stunning visual effects underwater.



Available in multiple power configurations to suit different depth and brightness requirements.

Power Rating

- 27W
- 45W

Operating Voltage

12 VDC

Input Voltage

Service Life

50000 hours

Construction & Durability



The 316L stainless steel housing ensures maximum corrosion resistance in salt-water environments.



IP68 waterproof rating makes it ideal for continuous submersion.

Waterproof Grade

IP68

Housing Material

316L Stainless Steel

Cover Material

Tempered Glass

Resistance Properties

Corrosion-proof, Waterproof, Shake-proof, Rust-proof

Installation & Application



Easy wall-mount installation suitable for various marine vessels and docks.

Recommended Applications

- Yachts and Boats
- Submarines
- Docks and Ponds
- Swimming Pools
- Fountains

Mounting Type

Wall Mounted

Commercial Advantages

Buyer Benefits

OEM & ODM Available, No MOQ, Fast Delivery, Online Payment Support