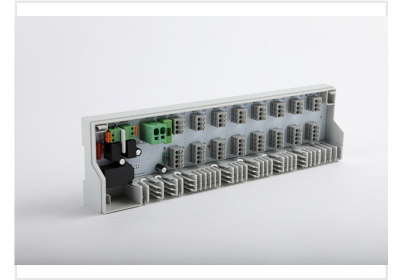
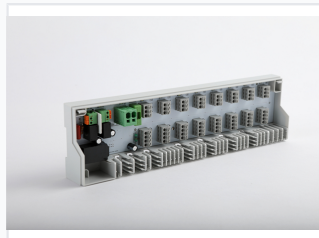
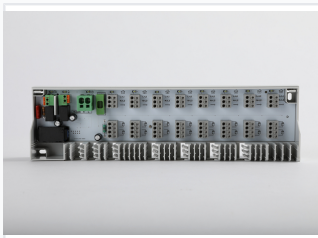


Underfloor Heating System Base Station

Base station is the central connection unit of a room-by-room temperature control for the surface temperature adjustment of heating systems. It can be wired to all system components such as thermostats and actuators with minimum expense.



ADDITIONAL IMAGES



Product Overview

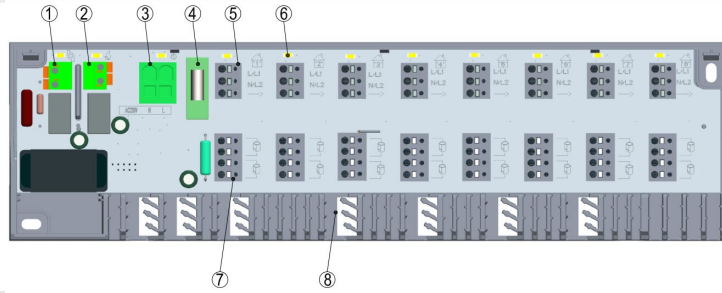


Ancillary components for a professional, fully integrated heating solution.

Central Connection Unit

This base station acts as the central connection hub for room-by-room temperature control in surface heating systems. Designed for 230V installations, it enables efficient wiring for thermostats and actuators to manage up to 8 distinct zones. It simplifies installation while providing advanced features like pump and boiler control with integrated safety delays.

Technical Specifications



Detailed terminal layout and connection points for zones and power supply.

Operating Voltage	230V
Number of Zones	8
Max Actuators	16
Control Direction	NC (Normally Closed)
Casing Material	Anti-flammable PC, ABS

Key Features

1.Pump control	<ul style="list-style-type: none"> -Potential-free contact for controlling a boiler circuit - Starting and switching-off delay: predefined with 2 minutes
2.Boiler control	<ul style="list-style-type: none"> - Potential-free contact for controlling a pump circuit - Starting and switching-off delay: predefined with 2 minutes
3.Voltage supply/through clamp	<ul style="list-style-type: none"> - Through clamp for the connection of electrical consumers as e. g. pump (only 230 Vversion)
4.Fuse	<ul style="list-style-type: none"> - Protects the INTCC direct by interrupting the circuit if the amperage exceeds a defined value for a predefined time.
5.Connection for thermostat	<ul style="list-style-type: none"> - Quick connection of up to 8 thermostats - Voltage supply for connected thermostats
6.Status signalling by leds	<ul style="list-style-type: none"> -Clear status signalling, also with the casing cover closed, for: <ul style="list-style-type: none"> - Boiler/pump active (white) - Operating status active (white) - Heating zone active(white-one status LED per heating zone)
7.Connection for actuators	<ul style="list-style-type: none"> - Voltage supply for connected actuators
8.Cable guide and strain relief	<ul style="list-style-type: none"> - Proven, integrated cable guide and strain relief according to DIN EN 60730-1

Comprehensive overview of pump/boiler control, safety features, and zone indicators.

Protection & Reliability

- 120s delayed start for pump/boiler
- Fuse protection
- Short-circuit prevention
- Overload protection
- Standard-complying strain relief (DIN EN 60730-1)

Installation & Usability



Loosen the casing cover at both latching points with a screwdriver and remove it.



Mark the two fixing holes for the basis and drill them. The basis must horizontally aligned. Install the basis with dowels and screws (2 units M4) depending on the condition of the wall.



Align the basis and tighten the screws by hand.



Lay the cables into the casing through the strain relief and install all cables to the basis using the clamping/plug-in technology. This is possible in a very short time.

Simple, tool-free installation process with integrated strain relief and clamping.

Signaling

Boiler/Pump Status LED • Operating Status LED • Zone Active LED

Connection Type

Screw-less terminal connection

Service & Warranty

Warranty

2 Years

Warranty Period