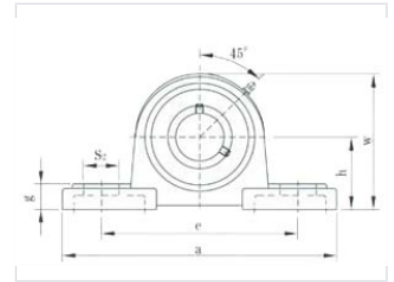


UCP300 Series Pillow Block Ball Bearing Unit

This UCP300 series ball bearing unit features a pillow block housing designed for robust performance in machinery and industrial applications. It is pre-lubricated for easy installation and maintenance and handles both radial and thrust loads.



Product Overview

UCP300 Series Pillow Block Ball Bearing Unit

The UCP300 series ball bearing units are engineered for robust performance in demanding machinery and industrial applications. These units feature a durable pillow block housing and arrive pre-lubricated to ensure ease of installation and reduced maintenance requirements. Designed to handle both radial and thrust loads, the bearing insert promotes smooth operation and an extended service life in various industrial environments.

Design Features

Lubrication	Pre-lubricated with a 45-degree grease fitting for convenient maintenance.
Mounting	Secure mounting, Pillow block housing

Technical Dimensions

Key Dimensional Parameters

- 45° angle reference
- S,
- w
- H
- e
- a
- w€