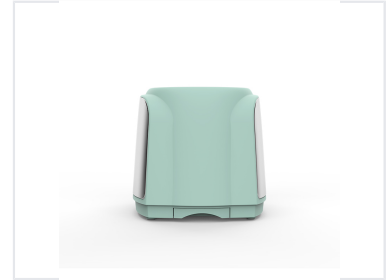


# Two-Slice Electric Toaster with Browning Control

This electric toaster is designed for toasting two slices of bread simultaneously. It features adjustable browning settings, including cancel, defrost, and reheat functions.



## ADDITIONAL IMAGES



## Product Overview

### Professional Two-Slice Toaster

This high-performance two-slice toaster combines a sleek retro aesthetic with modern kitchen convenience. Featuring a cool-touch exterior and a glossy stainless steel side panel, it ensures safe operation while providing a premium look. With versatile browning controls and dedicated functions for defrosting and reheating, this unit is designed for reliable, everyday performance in any professional or hospitality environment.

## Technical Specifications

### Power Performance

**700 W**  
Max Power

**240 V**  
Max Voltage

### Voltage Support

AC 220-240V, AC 100-120V

## Features

### Multifunction Settings

- Defrost
- Reheat
- Cancel

### Safety & Design

Cool Touch Exterior • Anti-slip Feet • Auto Shut Off • Auto Pop Up

## Maintenance & Convenience

### Cleaning

Slide-out crumb tray for easy access and cleaning

### Storage

Integrated cord storage under base