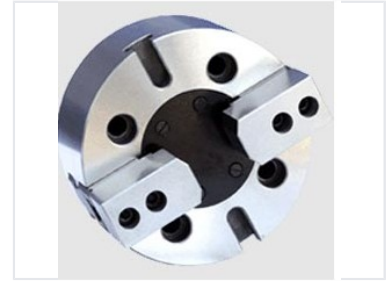


Two-Jaw Wedge Power Chuck

This two-jaw wedge power chuck is a precision workholding device for high-performance machining. Its wedge-style actuation provides exceptional gripping force and accuracy for various turning operations.



Product Overview

High-Performance Workholding

The K50 two-jaw wedge-type power chuck is a precision-engineered workholding device designed for demanding industrial machining applications. Featuring a robust wedge-style actuation mechanism, this chuck delivers exceptional gripping force and high accuracy for heavy cutting and high-speed operations. Its compact, self-centering design minimizes vibration and ensures consistent workpiece positioning, making it an ideal solution for efficient material removal in professional turning environments.

Technical Specifications

Construction Material	Hardened Steel
Actuation Mechanism	Wedge-style

Performance Metrics

Key Performance Metrics

2 Jaws

Jaw Count

1 Self-Centering

Centering Type

Features & Capabilities

Design Advantages

- Precision ground surfaces for accuracy
- Compact design for efficient footprint
- Optimized jaw configuration
- Vibration reduction technology

Suitable Applications	High-Speed Turning, Heavy Cutting, Precision Machining, Industrial Manufacturing
-----------------------	--