

# Two-Hole Copper Cable Lug Terminal with Inspection Window

This UL Listed copper compression lug is color-coded for easy identification. It features an inspection window and is used for power and grounding applications.



## Product Overview



### Professional Copper Compression Lugs

These two-hole code conductor standard barrel lugs are engineered for high-performance power and grounding applications. Each terminal features a built-in inspection window to verify correct cable insertion, ensuring electrical integrity and safety. Constructed from high-conductivity copper and color-coded for quick identification, these lugs provide reliable, long-lasting terminations in demanding electrical environments.

## Key Features

### Certifications & Design

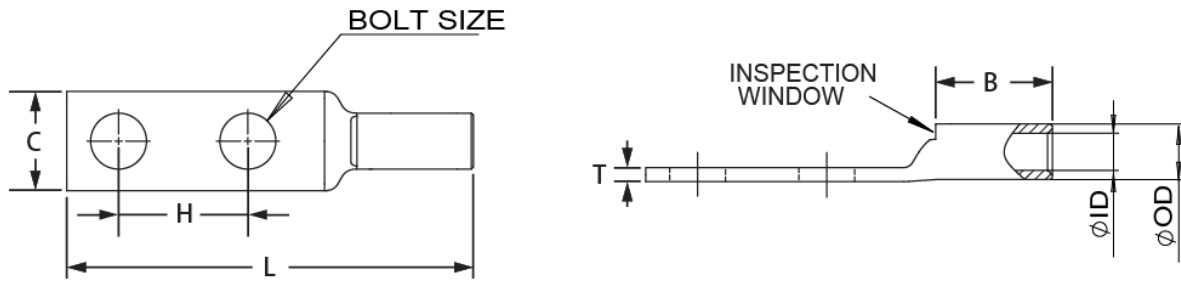
UL Listed, Color-Coded, Inspection Window, Two-Hole Design

## Application Details

### Common Applications

- Power distribution
- Equipment grounding
- Electrical panels
- Control circuits

## Technical Dimensions



### Dimension Parameters

- Bolt Size
- Inspection Window Opening
- Barrel Length (T, B, L)
- Inside/Outside Diameter (ID, OD)
- Clearance (C, H)