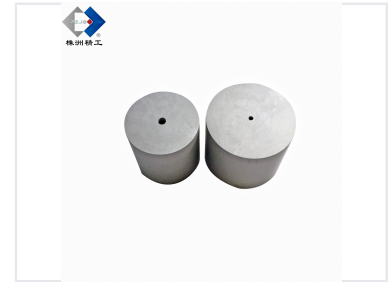
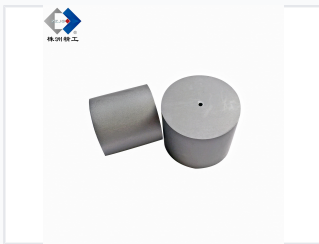


Tungsten Carbide Punch Dies

Tungsten carbide punch dies are engineered for high-precision industrial punching. Their premium construction provides exceptional wear resistance, dimensional stability, and consistent performance across various materials.



ADDITIONAL IMAGES



Product Overview

Industrial Precision Punching Dies

These high-precision tungsten carbide punching dies are engineered for demanding industrial applications requiring exceptional wear resistance and dimensional stability. Manufactured from premium-grade carbide with a fine grain structure, they offer superior edge retention and are suitable for processing diverse materials including ferrous metals, non-ferrous metals, composites, and plastics. Designed for high-volume production, these dies minimize burr formation and ensure consistent, accurate performance across long duty cycles.

Manufacturing Capabilities

Production Metrics

100 tons

Monthly Output

72200 sqm

Facility Area

300 employees

Staff Size

Technical Features

Material Compatibility

- Ferrous metals
- Non-ferrous metals
- Composites
- Plastics

Performance Features

High Wear Resistance, Dimensional Stability, Fine Grain Structure, Precision Ground Finish, Anti-Chipping