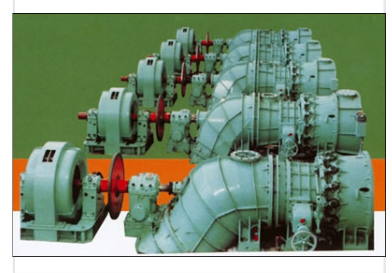


# Tubular Water Turbine Generator

High-efficiency tubular water turbine generating unit designed for low head hydropower applications. This turbine features a compact design, optimized hydrodynamics, and robust construction for reliable power generation.



## Product Overview

### High-Efficiency Low-Head Power Generation

The Tubular Water Turbine Generator is expertly engineered for low-head, high-flow applications typical of plain, hilly, and coastal regions. By utilizing a compact design, it offers a significant reduction in excavation requirements and overall project investment compared to vertical Kaplan units. This solution provides a high-efficiency power generation platform that optimizes both civil construction costs and equipment procurement.

## Technical Specifications

### Key Performance Metrics

**250 KW**

Minimum Capacity

**8000 KW**

Maximum Capacity

**2 m**

Minimum Head

**30 m**

Maximum Head

Runner Diameter

1.2m - 4.5m

## Economic Advantages

### Project Investment Savings

| Category                       | Savings Range |
|--------------------------------|---------------|
| Hydropower Station Civil Works | 10% - 20%     |
| Equipment Investment           | 5% - 10%      |

## Key Features

### Key Advantages

- Optimized for low head and large flow applications
- Higher efficiency across a wide range of operating conditions
- Reduced building excavation requirements
- Lower capital expenditure for water conservancy projects

Suitable Environments

Plains, Hills, Coastal regions