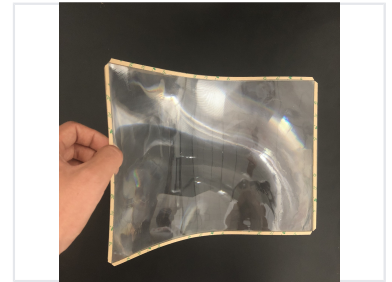
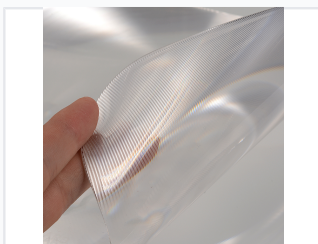


Truck Window Fresnel Lens for Wide Angle View

This Fresnel lens is designed for truck windows to provide a wide-angle view, enhancing visibility and reducing blind spots. Constructed from thin, transparent plastic, the lens utilizes concentric grooves to focus light and magnify the field of vision.



ADDITIONAL IMAGES



Product Overview

Low Profile Anti-Blind Spot Solution

This advanced Fresnel lens is engineered to eliminate critical blind spots for commercial vehicles while maintaining a low-profile footprint. By using a specialized adhesive perimeter, the lens provides a bubble-free, secure fit that survives window operation without catching on seals. It is the ideal solution for drivers requiring enhanced peripheral awareness without compromising their long-distance visibility at road junctions.

Technical Specifications

| | |
|----------------------|--|
| Material Composition | Water-clear, thin, flexible PVC |
| Dimensions | 279.4cm x 355.6cm |
| Installation | Self-adhesive peel-back surround for press-fit application |

Safety & Performance

Primary Utility

100 %

Visibility Enhancement

Benefits

Anti-Blind Spot, Wide-Angle View, Bubble-Free Installation, Low Profile Design