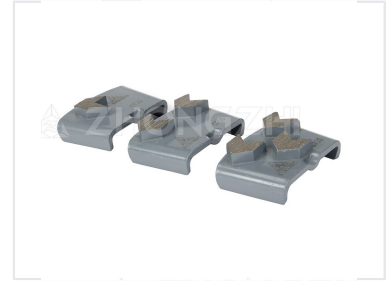


Trapezoid Diamond Grinding Plate for Concrete

Metal bond diamond grinding plate designed for aggressive grinding of concrete floors. Features a trapezoidal shape for easy attachment to floor grinding machines and is suitable for initial grinding and leveling.



ADDITIONAL IMAGES



Product Overview

Professional Concrete Grinding Solution

These trapezoid diamond grinding plates are engineered for high-performance surface preparation. Designed for both coarse and fine grinding, they are effective on concrete, epoxy, terrazzo, and stone surfaces. Their robust metal bond construction ensures a long lifespan and consistent material removal, making them an essential tool for preparing floors for polishing or coating applications.

Technical Specifications

Available Types

- FS Type
- HT Type
- Fan Type

Suitable Surfaces

Concrete, Epoxy, Terrazzo, Stone

Performance Metrics

Key Performance Advantages

Fast Grinding • Excellent Working Effect • Long Lifespan • Stable Quality

Performance Summary

100 %

Grinding Efficiency

1 High

Quality Consistency