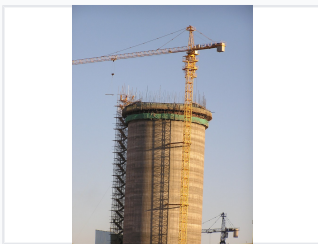


Tower Crane

This tower crane utilizes advanced technology in its design. Its structure is designed with three-dimensional software and force calculation software to ensure safety and performance.



ADDITIONAL IMAGES



Overview

TC5610 Tower Crane

The TC5610 is a high-performance tower crane engineered for demanding construction environments, including high-rise and bridge projects. It offers a maximum lifting capacity of 6 tonnes and features an adjustable jib length to suit varying site requirements. With a robust structural design and precise control mechanisms, this crane ensures efficient material handling and reliable operation across diverse lifting applications.

General Specifications

Maximum Height with Attachment	141.6 m
Mast Section Size	1.6 x 1.6 x 2.5m
Operating Temperature Range	-40 to +60°C

Performance

Core Performance Metrics

6 t Max Lifting Capacity	56 m Max Jib Length	1 t Tip Load at 56m
------------------------------------	-------------------------------	-------------------------------

Adjustable Working Range	44m, 50m, 56m
--------------------------	---------------

Mechanical Systems

Hoist Speed (2/4 Falls)

Falls	Speed (m/min)
2	9/38/80
4	4.5/19/40

Slewing Speed	0.6 r/min
---------------	-----------

Climbing Speed	0.5 m/min
----------------	-----------