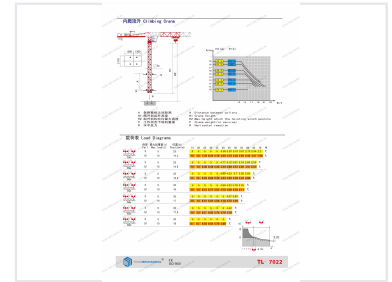
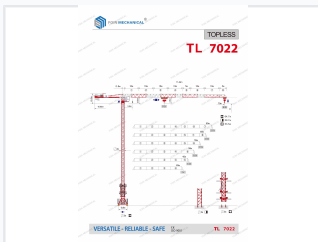


Topless Tower Crane with 25-ton Capacity

This tower crane features a topless design, eliminating the need for a tower cap or pull rod, which simplifies both assembly and disassembly. With greater structural strength, this crane has fewer parts, making it more convenient to transport.



ADDITIONAL IMAGES



General Overview

Topless Tower Crane TL7022

The TL7022 is a versatile topless tower crane engineered for demanding construction projects requiring high lifting capacities and operational efficiency. With a maximum jib length of 71.48 meters and a top load capacity of 10 tons, it provides reliable performance in various height configurations. The crane features advanced control systems and robust weather-resistant construction, making it suitable for stationary, climbing, and traveling applications.

Technical Performance

Performance Metrics

10 t

Max Capacity

71.48 m

Max Jib Length

64.7 m

Max Freestanding Height

Control System Types

AI control, VFD control, Ordinary speed control

Operational Configuration

Use Schemes

- Stationary
- Chassis weight
- Traveling Chassis
- Internal climbing

Power Requirements

- 220V/60Hz
- 380V/55Hz
- 400V/50Hz
- 440V/60Hz

Quality & Compliance

Certifications

CE • ISO • GOST • CU-TR

Finish Specifications

| Component | Specification |
|---------------------|--|
| Paint Thickness | 140 µ |
| Paint Type | UV-resistant, weather-resistant polyurethane |
| Ladders & Platforms | Hot-dip galvanized |

Service & Terms

Business Terms

| Term | Details |
|---------------|---------------------|
| Warranty | 16 months localized |
| Delivery Time | 10-35 days |
| MOQ | 1 set |
| Spare Parts | Free provided |