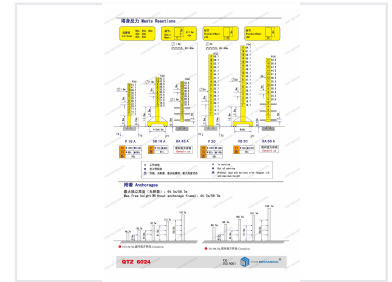
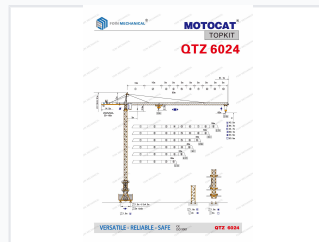
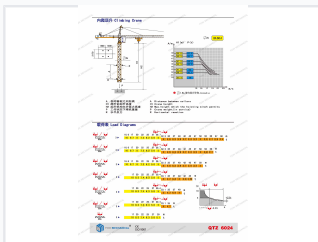


# Topkit Tower Crane with 70-Meter Radius

This topkit tower crane has a traditional appearance and a maximum working radius of 70 meters. It can reach a maximum height of 280 meters and lift up to 50 tons.



## ADDITIONAL IMAGES



## Product Overview

### Versatile Topkit Tower Crane

The 6024 Topkit Tower Crane is designed for high-performance lifting across diverse construction environments. With a maximum jib length of 61.7 meters and a lifting capacity of up to 10 tons, it offers adaptable configurations for various site requirements. Engineered for safety and reliability, this crane features durable UV-resistant coatings and advanced control systems for efficient operation.

## Technical Specifications

### Performance Metrics

**61.7 m**

Max Jib Length

**10 t**

Max Capacity

**64.7 m**

Max Height

### Base Configurations

- 1.6m x 1.6m
- 2m x 2m
- 4.5m x 4.5m
- 6m x 6m

### Available Jib Lengths

30m, 35m, 40m, 45m, 50m, 55m, 60m, 61.7m

## Operation & Control

### Control System Types

AI Control • VFD Control • Ordinary Speed Control

### Operational Schemes

- Stationary
- Chassis Weight
- Traveling Chassis
- Internal Climbing

### Supported Power Supply

220V/60Hz, 380V/55Hz, 400V/50Hz, 440V/60Hz

## Construction Quality

### Coating Specifications

140µ UV-resistant and weather-resistant polyurethane

### Galvanization

Yes

## Compliance & Service

### Certifications

CE, ISO, GOST, CU-TR

### Warranty Period

16 months