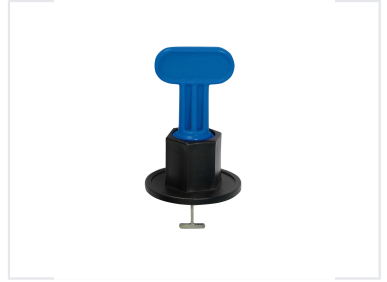


Tile Leveling System with T-Spin Adjustment

This tile leveling system is designed to create perfectly level, lippage-free tile installations. The system includes reusable caps, bases, and an adjustment tool.



ADDITIONAL IMAGES



Product Overview

Professional Tile Leveling Solution

The T-Spin Tile Leveling System is designed to ensure a lippage-free and perfectly level surface for both wall and floor tiling projects. Featuring a durable and ergonomic T-shaped handle, this system allows for quick, precise adjustment to hold tiles firmly in place while the adhesive sets. Its reusable design and high-quality materials provide an economical, professional-grade solution for installers seeking consistency and efficiency.

Technical Specifications

Included Components

- 100pcs T-spacers
- 100pcs adjustment caps
- 2pcs adjustment wrenches

Max Tile Thickness

16 mm

Materials

POM Handle, PE Cap, Stainless Steel Pin

Usage & Compatibility

Best For

Wall Tiling • Floor Tiling • Professional Use • DIY Projects

Installation Steps

Step	Action
1	Place spacer 100mm from tile ends
2	Fasten cap and level with wrench
3	Allow adhesive to dry completely
4	Remove by kicking cap or using mallet
5	Retrieve cap for re-use