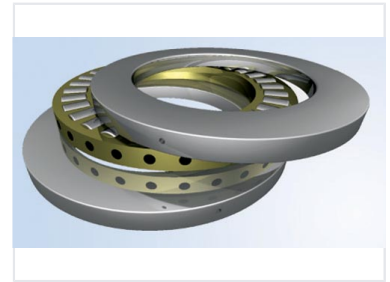


Thrust Bearing for Wind Generators

This thrust bearing is designed for wind generator applications. It features hardened steel races and rollers for durability and high load capacity.



Product Overview

Engineering Excellence for Wind Power

This high-performance thrust bearing is engineered specifically for demanding wind generator applications, ensuring optimal efficiency under heavy loads. Featuring precision-hardened steel races and robust brass cages, it provides superior durability and alignment for critical wind turbine operations. Its advanced design is built to withstand harsh environmental conditions while minimizing friction for extended service life.

Technical Specifications

Materials	Hardened Steel, Brass Cage
Load Capacity	Axial

Key Features

Performance Benefits

- High load-bearing capacity
- Corrosion-resistant construction
- Wear-resistant hardened components
- Optimized roller alignment to prevent skewing

Environmental Suitability

Harsh Environments • Industrial Grade