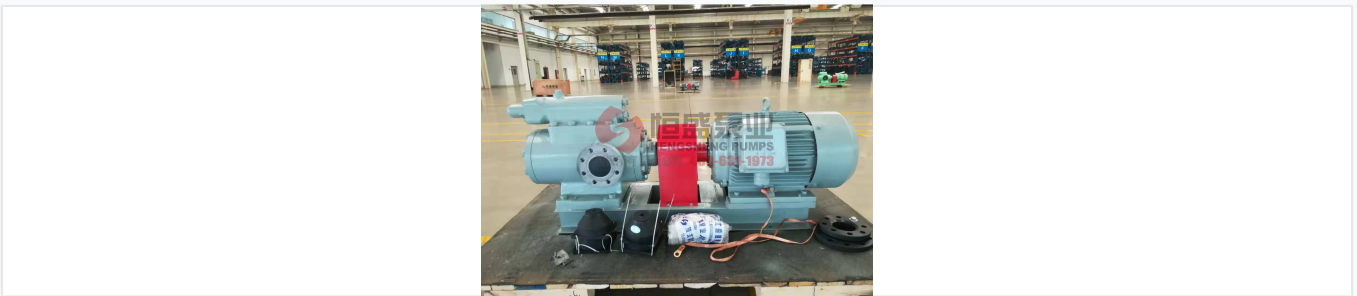


Three Screw Pump for Fluid Transfer

This positive displacement pump is engineered for transferring a variety of fluids. Its screw design ensures a smooth, pulsation-free flow, making it suitable for demanding industrial applications.



Overview



Robust positive displacement pump design for industrial fluid transfer.

Industrial Three Screw Pump

The SN series three screw pump is a precision-engineered positive displacement pump designed for versatile fluid transfer applications. Featuring a rotor hydraulic balance design, it offers low noise and vibration-free operation with stable, pulseless flow. Its compact, lightweight construction and high-speed capability make it an ideal solution for demanding industrial, marine, and chemical fluid delivery systems.

Performance Specifications

Key Performance Metrics

318 m³/h

Max Flow Rate

4 Mpa

Max Pressure Difference

3400 r/min

Max Speed

150 °C

Max Working Temperature

Medium Viscosity Range

3-3750 cst

Key Features



Internal components assembly showcasing precision construction.

Design Advantages

- Rotor hydraulic balance for minimal vibration and noise
- Stable, pulsation-free output
- High operational efficiency
- Strong self-absorption capability
- Versatile, serialized design with flexible installation methods
- Compact and lightweight with high-speed performance

Application Data

Conveying Medium Types

- Lubricating liquids (mechanical, heavy, residual oils)
- Low lubricity liquids (light/heavy diesel, wax, thin oils)
- Viscous liquids (synthetic rubber, artificial glue, emulsions)

Primary Applications

Heating Systems, Hydraulic Systems, Lubrication Systems, Chemical Industry, Petrochemical, Food Industry, Marine Engineering