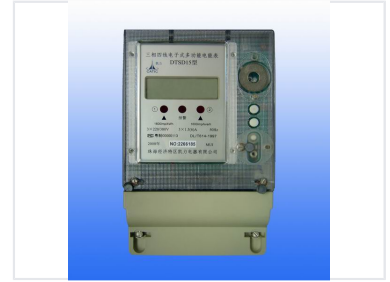


# Three-Phase Multifunction Energy Meter

This is a three-phase, four-wire electronic multi-function energy meter for measuring electrical energy consumption. It features a digital display and impulse outputs for kWh and kvarh.



## Overview

### High-Precision Energy Monitoring

This three-phase four-wire electronic multi-function energy meter is engineered for accurate electrical energy consumption measurement in professional settings. Designed for reliability and precision, it supports standard industrial voltage and current configurations. It is a robust solution for monitoring energy usage, featuring clear digital output and impulse indicators for both kWh and kvarh.

## Electrical Specifications

Voltage Rating	3x220/380V
Current Rating	3x1.5(6)A
Operating Frequency	50 Hz

## Performance Metrics

### Key Performance Metrics

**1600 imp/kWh**  
kWh Impulse Output

**1600 imp/kvarh**  
kvarh Impulse Output

## Compliance & Standards

Compliance Standards	DL/T614-1997
----------------------	--------------

## Device Details

### Model Information

Attribute	Details
Model Type	DTSD15
Manufacturing Year	2008