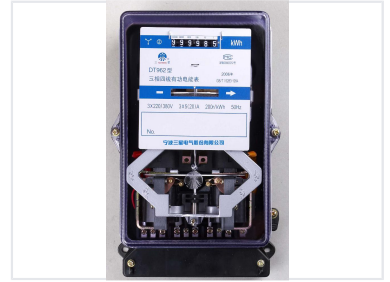


# Three-Phase Four-Wire Active Energy Meter

This three-phase four-wire active energy meter utilizes advanced technology for accurate measurement. It is designed for measuring watt-hour consumption at a frequency of 50 Hz AC.



## Product Overview

### Three-Phase Four-Wire Active Energy Meter

The DT962 is a high-precision three-phase, four-wire active energy meter designed for reliable electrical energy measurement. Engineered for 50Hz AC systems, it utilizes advanced technology to ensure long-term stability and accurate consumption tracking. This meter is built to meet rigorous industrial standards, making it a dependable solution for monitoring power usage in three-phase electrical environments.

## Technical Specifications

Voltage Rating	3x220/380V
Current Range	3x5(20)A
Frequency	50 Hz
Pulse Output	200r/kWh

## Compliance & Standards

Standards Compliance	GB/T 15283-1994
----------------------	-----------------

## Display & Interface

Display Type	Mechanical Counter
Measurement Unit	kWh

## Key Metrics

### Performance Highlights

**50 Hz**

Frequency

**200 r/kWh**

Pulse Constant