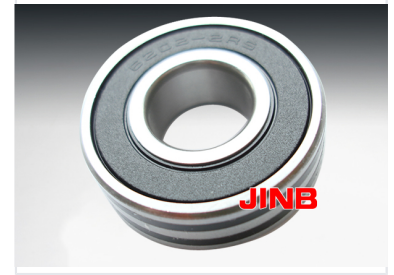
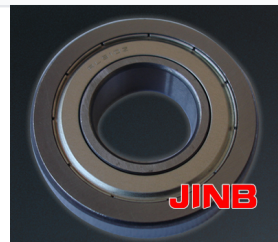
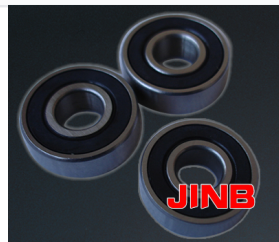
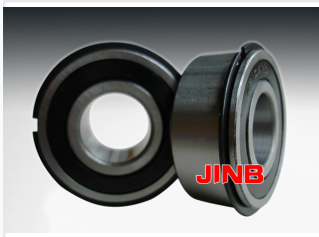


Three-Phase Diesel Generator Set

This three-phase diesel generator set delivers reliable power. It operates at 50 Hz and 400 volts with a power factor of 0.8.



ADDITIONAL IMAGES



Overview

Three-Phase Diesel Generator Set

This three-phase diesel generator set is engineered for reliable power generation, offering versatile performance for both standby and prime power applications. It operates at 50 Hz with a standard output of 400 volts and a power factor of 0.8. Designed to meet international standards, the unit provides consistent energy delivery under variable load conditions.

Electrical Specifications

Alternative Voltage Configurations

- 415/240V
- 380/220V
- 220/127V
- 200/115V
- 440/254V
- 208/120V

Rated Frequency	50 Hz
Rated Voltage	400 V
Power Factor	0.8

Performance Standards

Rating Definitions

Rating Type	Description
ESP (Standby Power)	Standby duty, operation under variable load, without overload.
PRP (Prime Power)	Continuous duty operation, under variable load 24/24h; 10% overload permissible 1 hour/12 hours.

Compliance

ISO 3046 • ISO 8528

Ambient Reference Conditions

1,000 mbar, 27°C, 30% Relative Humidity

Engine & Mechanical

Governor Options

- M: Mechanical speed governor
- E/ECM: Electronic speed governor

Aspiration Types

- NA: Naturally aspirated
- TC: Turbocharged
- TCA: Turbocharged and air-air aftercooled
- TCW: Water-cooled Turbocharged