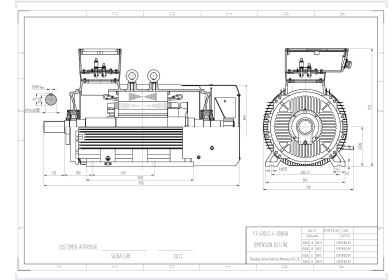
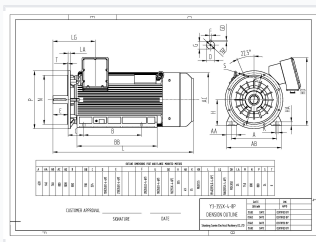


Three-Phase Asynchronous Electric Motor

This three-phase motor features a totally enclosed fan-cooled squirrel cage design, incorporating new materials and safety technology. It is suitable for use in various general machinery applications such as fans, pumps, and machine tools, as well as in hazardous environments.



ADDITIONAL IMAGES



Product Overview

High-Efficiency Y3 Series Motor

The Y3 series is a high-performance, totally enclosed fan-cooled squirrel cage three-phase asynchronous motor. Engineered for versatility, it integrates advanced materials and safety technology to provide reliable power for demanding industrial environments. It is ideally suited for fans, pumps, compressors, and machine tools, including those operating in hazardous locations like mining and chemical processing.

Certifications & Standards

Certifications

ISO 9001, ISO 14000, ISO 18000, CE, SABS, SASO

Technical Specifications

Cooling System

Totally Enclosed Fan Cooled (TEFC)

Motor Type

Squirrel Cage Three-Phase Asynchronous

Dimensional Data

Y3-355X-4-8P Dimensions (Key)

Dimension	Value	Unit
Shaft Height (H)	355	mm
Frame Width (A)	630	mm
Mounting Length (B)	800	mm
Overall Height (HD)	1000	mm

Industrial Applications

Suitable Applications

- Fans
- Pumps
- Machine Tools
- Compressors
- Mining Industry
- Oil & Chemical Processing