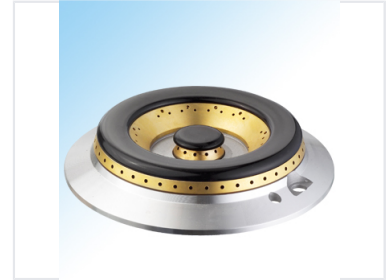


Textile Machinery Burner Head

This burner head is precision-engineered for textile machinery applications. Its multi-orifice design ensures efficient and uniform heat distribution.



Product Overview

Precision Textile Thermal Solution

This precision-engineered burner head is specifically designed for high-demand textile machinery applications. Its advanced multi-orifice design ensures efficient and uniform heat distribution, providing the precise temperature control essential for textile processing. Built with highly durable, corrosion-resistant materials, this component is optimized for reliability and ease of maintenance in industrial environments.

Technical Specifications

Operational Advantages

- Optimized gas flow
- Uniform heat distribution
- Precise temperature control
- Easy maintenance

Design Configuration

Multi-orifice burner head

Construction Qualities

Corrosion Resistant, Industrial Grade, Durable

Application

Primary Application

Textile processing machinery