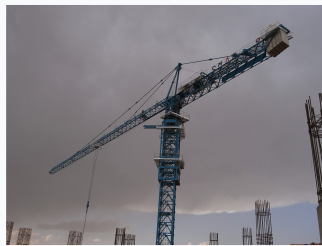


# TC7050 Tower Crane

This tower crane utilizes advanced technology in its design for optimal performance. Its structure is designed with three-dimensional software, ensuring high safety and reliability.



## ADDITIONAL IMAGES



## Overview

### TC7050 Tower Crane Overview

The TC7050 is a high-capacity tower crane engineered for demanding construction environments, offering a maximum lifting capacity of 20 tons and a versatile jib length of up to 70 meters. Its robust structural design ensures stability during heavy-duty operations, while the advanced control system facilitates precise material handling. Built for efficiency and reliability, this crane is an ideal solution for high-rise building projects and large-scale infrastructure construction.

## Key Performance Metrics

### Key Performance Metrics

**20 t**

Max Lifting Capacity

**70 m**

Max Jib Length

**247 m**

Max Height

**5 t**

Tip Load at 70m

## Technical Specifications

### Operational Limits

- Independent height: 70m
- Max working range: 70m
- Min working range: 3.7m
- Operating temperature: -40°C to +60°C

### Mechanism Details

Component	Speed	Motor/Spec
Hoist	0-120 m/min	YZPF280S-4, 75KW
Trolleying	0-60 m/min	YLEW112M-6, 120Nm
Slewing	0-0.6 r/min	YLEW112M-6, 120Nm

## Features

Safety & Compliance

Overload Protection, Anti-collision System, Emergency Stop Mechanisms