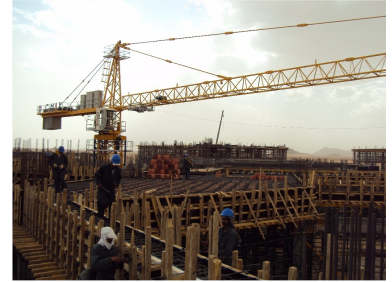


# TC6016 Tower Crane

This tower crane utilizes advanced technology in its design. Its structural parts are designed by three-dimensional software and force calculation software to ensure safety and performance.



## ADDITIONAL IMAGES



## Overview

### TC6016 Tower Crane

The TC6016 is a versatile tower crane designed for high-efficiency lifting in large-scale construction environments. It features a robust 10-ton maximum lifting capacity and an adaptable working range of up to 60 meters. With advanced VVVF and PLC-based control systems for all primary mechanisms, it ensures smooth operation, safety, and precise material handling for high-rise and infrastructure projects.

## Key Performance Metrics

### Operating Specs

**10 t**

Max Lifting Capacity

**60 m**

Max Working Range

**1.6 t**

Tip Load at 60m

**50.5 m**

Independent Height

## Operational Details

### Hoist Performance

Fall	Capacity (t)	Speed (m/min)
2	2.5	0-100
4	5.0	0-50
2	5.0	0-50
4	10.0	0-25

### Operational Speeds

- Trolleying Speed: 60/30/9 m/min
- Slewing Speed: 0.31-0.6 r/min
- Climbing Speed: 0.5 m/min

## Technical Specifications

Mast Dimensions	2m x 2m x 3m
Operating Temperature Range	-40°C to +60°C
System Technologies	VVVF, PLC Control