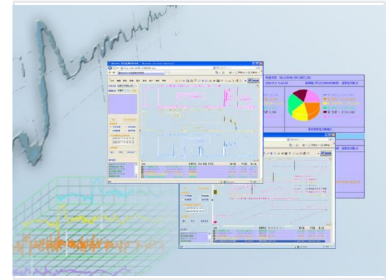


System Status Monitoring and Analysis Tool

This system provides real-time monitoring and in-depth analysis of system performance. Interactive data visualization tools enable users to quickly identify trends and anomalies.



Product Overview

Real-time Monitoring and Analysis System

The status monitoring and analysis system provides comprehensive real-time tracking of system performance. It is designed to assist professionals in identifying trends and anomalies through advanced data visualization tools including candlestick charts, pie charts, and 3D graphs. By supporting extensive data logging and reporting, the tool facilitates proactive maintenance and ensures optimal resource utilization.

Key Performance Metrics

Performance Indicators

0.539 Primary Metric A	1.208 Primary Metric B
----------------------------------	----------------------------------

Technical Features

Data Visualization Capabilities

- Candlestick charts
- Pie charts
- 3D graphs

Core Functionalities

Real-time Monitoring, Deep Analysis, Data Logging, Automated Reporting, Customizable Dashboards

Compliance and Operational Info

Last Recorded System Date

2008-05-16