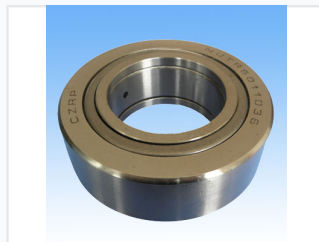


Stud Type Track Roller Cam Follower

Stud type track rollers are specialized bearings designed for linear motion systems. The rollers feature a thick-walled outer ring that withstands high radial and shock loads.



ADDITIONAL IMAGES



Product Overview

Industrial Cam Followers

Stud type track rollers, also known as cam followers, are precision-engineered bearings designed to handle high radial and shock loads in linear motion systems. Featuring a thick-walled outer ring, these rollers minimize deformation and stress, ensuring smooth operation in demanding environments. With their integrated stud design, they provide secure and efficient mounting for a variety of automation and conveyor machinery.

Technical Specifications

Design Features

- Thick-walled outer ring for high radial load capacity
- Cambered outer surface to prevent stress concentration
- Quenched stud race for enhanced durability
- Hardened steel construction

Common Applications

Cam mechanisms • Conveying systems • Automation equipment • Linear motion guidance

Series Availability

CF, KR, NUKR, PWKR, CR, NATR, NATV, NUTR, RSTO, STO, CRY