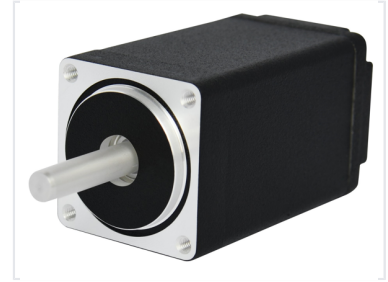


Stepper Motor - VHSM28 Model

This stepper motor is designed for precise motion control applications. It features a robust construction with a square flange for secure mounting, making it suitable for CNC machines, robotics, and automation systems.



Overview

High-Precision Stepper Motor

The VHSM28 is a professional-grade stepper motor engineered for high-performance motion control systems. It offers reliable positioning accuracy and consistent torque output, making it an excellent choice for robotics, CNC machining, and automated industrial equipment. Its compact design and robust construction ensure seamless integration into diverse automation setups.

Technical Specifications

Performance Metrics

15 N.cm

Holding Torque

1.8 °

Step Angle

0.8 A

Rated Current

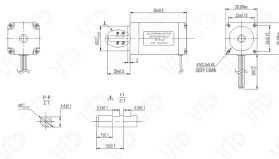
Electrical Characteristics

Parameter	Value
Rated Current	0.8 A
Resistance	9 Ω
Drive Mode	2-2
Step Accuracy	$\pm 5\%$

Physical Dimensions

型号	额定电压	额定功率	额定电流	额定速度	额定转矩	额定转速	额定力矩	额定力矩	额定力矩
VHSM28	24V DC	30W	1.25A	1000 RPM	0.08N.m	1500 RPM	0.08N.m	0.08N.m	0.08N.m

规格参考 Specification



Mechanical Data

- Diameter: $\varnothing 22 \pm 0.033$ mm
- Length: 50 ± 0.8 mm
- Mounting: 4-M2.5x0.45 screws (3.5mm depth)
- Lead Wire Length: $300 + 20 / - 0$ mm
- Rotor Inertia: 18g.cm²
- Detent Torque: 0.8N.cm