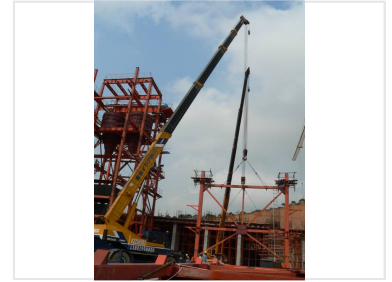


Steel Structure Erection Cranes

These cranes are used for lifting and positioning large metal framework components. They are essential equipment on construction sites for erecting buildings and industrial facilities.



Product Overview

Heavy-Duty Steel Structure Erection Cranes

These specialized erection cranes are engineered for the precise lifting and positioning of heavy steel framework components in industrial and commercial construction environments. Designed for stability and control, they facilitate the efficient assembly of complex structural steel skeletons. Their robust construction ensures reliable performance during critical erection phases on large-scale building sites.

Technical Specifications

Model Identifier	RK500
Direct Inquiry Reference	82236582
Primary Application	Steel Structure Erection, Industrial Construction, Heavy Lifting