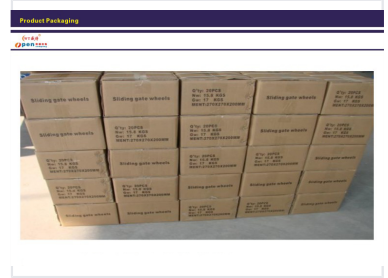
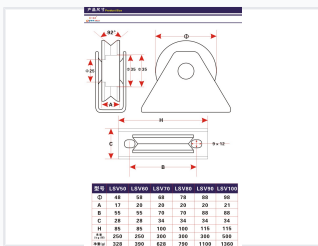


# Steel Sliding Gate Roller with V-Groove

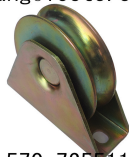
This sliding gate roller is constructed from 1045 steel and finished with a zinc or galvanized coating. It is available with single or double bearings and a V, O, Y, or U-groove, supporting a loading capacity of 450 kgs.



## ADDITIONAL IMAGES



huang@loetc.com



+86-570-7255110  
+86-13957004225

## Product Overview

### Professional Grade Sliding Gate Hardware

These heavy-duty sliding gate rollers are engineered for smooth and reliable operation in diverse gate systems. Constructed from high-quality metal with a corrosion-resistant finish, they ensure long-term durability in both residential and industrial environments. The V-groove design, paired with a sturdy mounting bracket, provides precise alignment and structural stability for your gate infrastructure.

## Technical Specifications

### Dimensions & Load Capacity

Model	Diameter (mm)	Load Capacity (kg/pair)	Net Weight (g)
LSV50	48	250	328
LSV60	58	250	390
LSV70	68	300	628
LSV80	78	300	790
LSV90	88	300	1100
LSV100	98	500	1360

V-Groove Angle: 92 degrees

Mounting Hole Dimensions: 9x12 mm

## Logistics & Packaging

### Box Specifications

**20 pcs**

Quantity per Box

**15.8 kg**

Net Weight per Box

**17 kg**

Gross Weight per Box

Box Dimensions

270 x 270 x 200 mm

## Applications

Suitable Environments

Industrial, Commercial, Residential