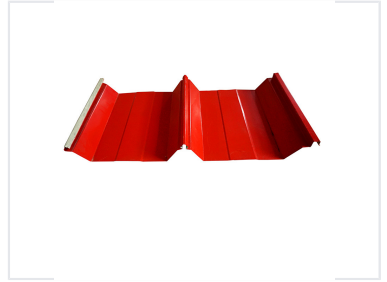


# Steel Roof Panel Roll Forming Machine

This rolling mill is designed for the efficient production of joint-hidden steel metal roof panels, suitable for large-span construction. It features a robust frame and an integrated control system for automated operation.



## ADDITIONAL IMAGES

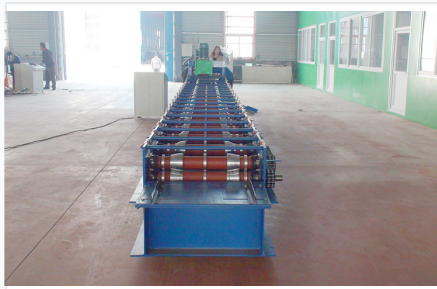


## Overview

### Automated Join-Hidden Roof Panel Production

This automatic roll forming machine is engineered for the efficient, high-volume production of joint-hidden steel roof panels. Designed for large-span construction projects, it creates durable, weather-tight roofing solutions with a seamless, aesthetically pleasing finish. The system integrates a manual decoiler, precision forming rollers, hydraulic cutting, and PLC control to ensure consistent panel quality and operational reliability.

## Technical Specifications



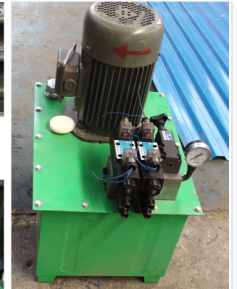
Precision forming stations for consistent panel profiles



Gradual metal shaping through multiple roller passes



<Hydraulic Pump>



Robust hydraulic power unit for consistent cutting operations

Production Speed	12 m/min
Roller Stands	17
Main Motor Power	3 kW
Hydraulic Pump Power	3 kW
Side Panel Thickness	14 mm
Main Frame	350H Steel
Power Supply	380V / 50Hz / 3 Phase

## Materials and Components

Roller Material	Carbon Steel 45#
Cutting Blade Material	Cr12 with quenched treatment (60-62 HRC)
Compatible Material	Color Steel Plate

## System Features



PLC control system for precise production monitoring

### Included Components

- Manual decoiler
- Main roll forming machine
- Post-cut hydraulic system
- PLC control system
- Stacking table

Control System	PLC Control (Mitsubishi/Delta/Others)
----------------	---------------------------------------