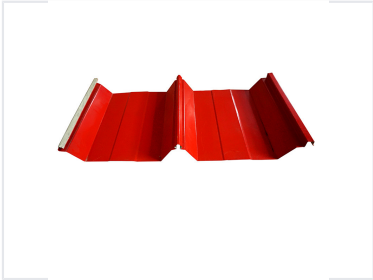


Steel Roof Panel Forming Machine

This rolling mill forms steel roof panels with a concealed joint system. It is engineered for precise and efficient production of durable, weather-resistant roofing solutions.



ADDITIONAL IMAGES



Product Overview



Complete automated roll forming system for high-quality roof panel production.

Professional Steel Roof Forming Solution

This automated roll forming machine is engineered for the efficient production of joint-hidden, big-span steel roof panels. Designed for industrial and commercial applications, the system integrates precision rolling technology with a robust hydraulic cutting mechanism to deliver consistent, weather-resistant roofing materials. The machine features a modular design with an advanced PLC control system, ensuring high-volume output and long-term reliability for large-scale construction projects.

Technical Specifications



Robust construction featuring precision forming stations for consistent panel profiles.

Production Speed	10 m/min
Roller Stands	17 rows
Side Panel Thickness	14 mm
Main Frame	350H Steel

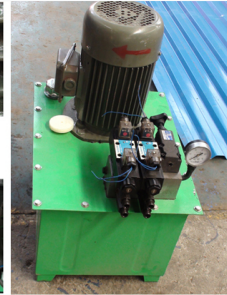
Power and Control



User-friendly PLC control system for precise operational adjustments.



<Hydraulic Pump>



High-efficiency hydraulic power unit driving the cutting and forming operations.

Power Supply	380V/50Hz/3-Phase
Main Motor Power	3 kW
Hydraulic Pump Power	3 kW
Control System	PLC Control (Mitsubishi/Delta/Others)

Materials and Components



Precision-engineered rollers designed for durability and accurate metal shaping.

Roller Material	Carbon Steel 45#
Blade Material	Cr12 (Quenched 60-62°C)
Compatible Material	Color Steel Plate

System Configuration

Included Components

- Manual decoiler
- Main roll forming machine
- Post-cut mechanism
- Hydraulic system
- PLC control unit
- Stacking table