

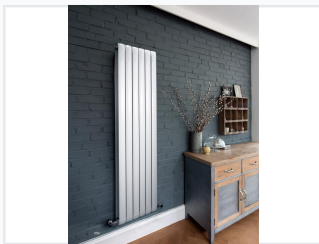
# Steel Panel Radiator Towel Warmer

This steel panel radiator quickly heats up and is easy to use. It is designed for warming towels in bathrooms and other spaces.

**AF-CA Series** ● Chrome ○ White

Code	Length (mm)	Width (mm)	Distance (mm)	Height (mm)	Tube (mm)	EN442 (BTU/Watt)	
						Chrome	White
AF-CA04001	1844	694	1800	60	5	/	8905 2610
AF-CA04002	1544	694	1500	60	5	/	7538 2209
AF-CA04003	644	1108	600	60	8	/	4976 1458

## ADDITIONAL IMAGES



## Product Overview

### Premium Steel Panel Radiator

This high-performance steel radiator towel warmer combines modern design with efficient thermal output for contemporary bathrooms and living areas. Engineered for both hydronic and electric heating systems, it features a specialized welding patent for superior durability and structural integrity. Built to meet international EN442 standards, this unit ensures reliable performance and longevity in any professional interior installation.

## Technical Specifications

### Available Finishes

Chrome Plating (Cr 6+/3+) • Customized Powder Coating

<b>Material</b>	Mild Steel (SPCC / Q195)
<b>Compliance</b>	EN442, ISO 9000, ISO 14001, SA8000
<b>Heating Compatibility</b>	Central Hydronic, Electric Heating

## Performance Data

### Model Configurations (White Finish)

Model Code	Length (mm)	Width (mm)	BTU Rating	Wattage
AF-CA04001	1844	694	8905	2610
AF-CA04002	1544	694	7538	2209
AF-CA04003	644	1108	4976	1458