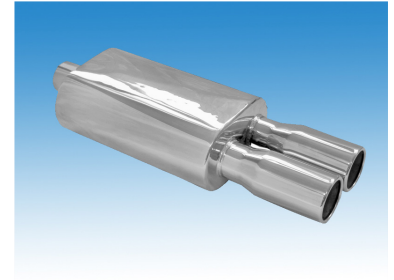
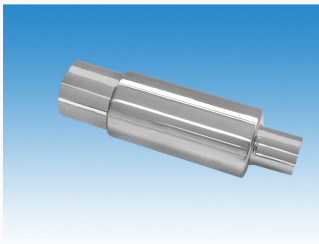


Stainless Steel Exhaust Muffler

This stainless steel exhaust muffler is designed to reduce exhaust noise while maintaining optimal engine performance. It features durable construction to withstand high temperatures and corrosive environments.



ADDITIONAL IMAGES



Product Overview

Professional Exhaust Solutions

This stainless steel exhaust muffler is engineered for optimal exhaust flow and noise reduction in automotive applications. Constructed from high-grade, durable stainless steel, the unit provides superior resistance to corrosion and heat while maintaining long-term structural integrity. Its precision-welded seams and internal baffling system ensure effective sound attenuation and maximized engine performance, making it a reliable solution for various vehicle models.

Material and Finish

Material Composition	High-grade Stainless Steel, Corrosion Resistant, Heat Resistant
Surface Finish	Polished

Performance Features

Key Performance Attributes

- Optimized exhaust flow
- Reduced backpressure
- Effective noise attenuation
- Deep, resonant exhaust note
- Precision-welded seams

Technical Configuration

Design Specifications

1 count Central Exhaust Outlet	2 count Inlet Pipes
--	-------------------------------

Muffler Design	Cylindrical body with internal baffling
----------------	---