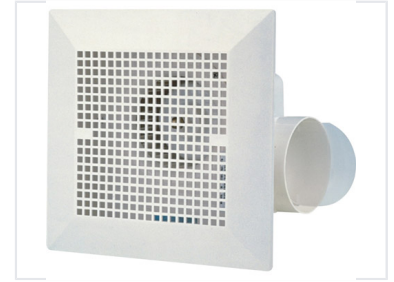


Square Grille Window Ventilator for Air Extraction

This window ventilator is designed for efficient air extraction in residential and commercial spaces. It features a square grille front and a circular duct outlet for easy connection to ventilation systems.



Product Overview

Efficiency in Air Extraction

The BPT-B2 window ventilator is engineered for high-performance air extraction in both residential and commercial environments. Its square grille design ensures wide coverage, while the circular duct outlet facilitates seamless integration into existing ventilation systems. Constructed from robust white plastic, it offers versatility for both wall and window mounting applications.

Design and Build

Material	Durable white plastic
Front Grille Shape	Square

Installation

Mounting Methods	Wall Mount, Window Mount
Duct Outlet	Circular

Applications

Suitable Areas

- Bathrooms
- Kitchens
- Residential Spaces
- Commercial Spaces