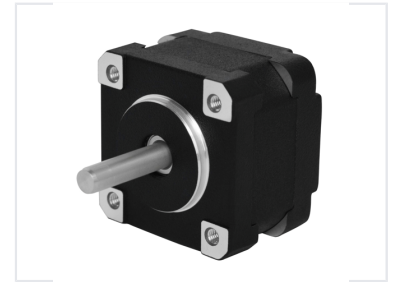


Square Body Stepper Motor

This high-precision stepper motor is designed for accurate and reliable motion control. The compact square body features mounting holes for easy integration into robotics, automation, and precision positioning systems.



Overview

Professional Grade Stepper Motor

The VHSM35 is a high-precision stepper motor engineered for demanding automation and robotics applications. Featuring a robust square body design and a standard 1.8° step angle, it offers reliable and accurate motion control. With integrated wiring and standard mounting configurations, it is optimized for seamless integration into various industrial positioning systems.

Performance Metrics

Performance Highlights

14 N.cm

Holding Torque

1.8 °

Step Angle

1.5 A

Rated Current

Electrical Specifications

Electrical Properties

Parameter	Value
Rated Current	1.5A
Resistance	1.4 Ω
Drive Mode	2-2
Step Accuracy	$\pm 5\%$

